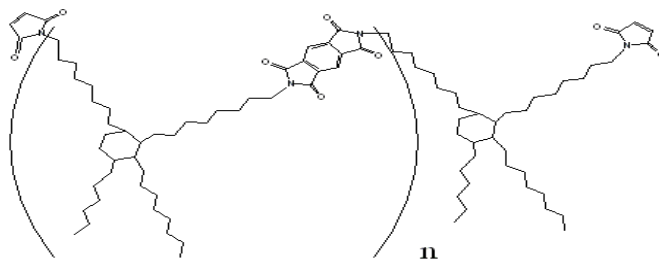


TECH DATA SHEET

BMI-3000 J

Solution



10080 Willow Creek Road
San Diego, CA 92131
858-348-1122
www.designermoleculesinc.com

DESCRIPTION

Where n = 1 to 10

BMI-3000 J is a bismaleimide oligomer that exhibits excellent flexibility and, on cure, forms very tough, hydrophobic polyimides. BMI-3000 J Solution has been prepared in toluene solvent to reduce price and increase the ease of use for the customer. The material has excellent low pH hydrolytic resistance and thermal stability. As an additive it can improve rheological properties by increasing the thixotropic properties of a liquid monomer composition. This feature in turn can help to reduce resin bleed out on a variety of surfaces. It is soluble in most aromatic and aliphatic solvents such as toluene, xylene, NMP, etc.

HIGHLIGHTS

• Toughener	• Excellent dielectric properties
• Hydrophobic	• Superior thermal stability

TYPICAL PHYSICAL AND CHEMICAL PROPERTIES

PROPERTY	METHOD	RESULT
Appearance at Room Temperature	Visual	Light yellow powder
Functionality		2
Resin Content		~ 61.0 w.%
Tg; CTE α_1/α_2	TMA	37 °C; > 100 ppm/°C
Modulus @ 25°C	DMA	211 MPa
Dielectric Constant (Dk)	Cavity Perturbation Method @ 20 GHz	2.3
Dissipation Factor (Df)		0.0016
Decomposition Temperature Td (5%)	TGA	436°C
Elongation	Instron	125%
Water Absorption	23°C/24 hr. immersion	0.28%
Continuous Operating Temperature (approximate)		< 180 °C
Recommended Storage Temp		25 °C or below

Evaluations performed on samples cured after solvent removal at 175°C for 1 hr. using 2 wt.% Dicumyl Peroxide catalyst.

Data is for reference only and may vary depending on testing method used. The structure shown above is an idealized representation of a statistical distribution.

RECOMMENDED FORMULATION USE:

BMI-3000 J is recommended for use as an additive to increase flexibility, hydrophobicity and thixotropy. It has excellent adhesion to a variety of substrates. When used as a base resin, it can produce films that are tough, flexible and demonstrate good peel strength.

CONTACT:

REQUEST A SAMPLE OR PLACE AN ORDER

Customer Support ☒
support@designermoleculesinc.com

REF: DMI Part Number: R1288S